

# Sound BLASTER®

## COMMAND SOFTWARE GUIDE





## GETTING STARTED

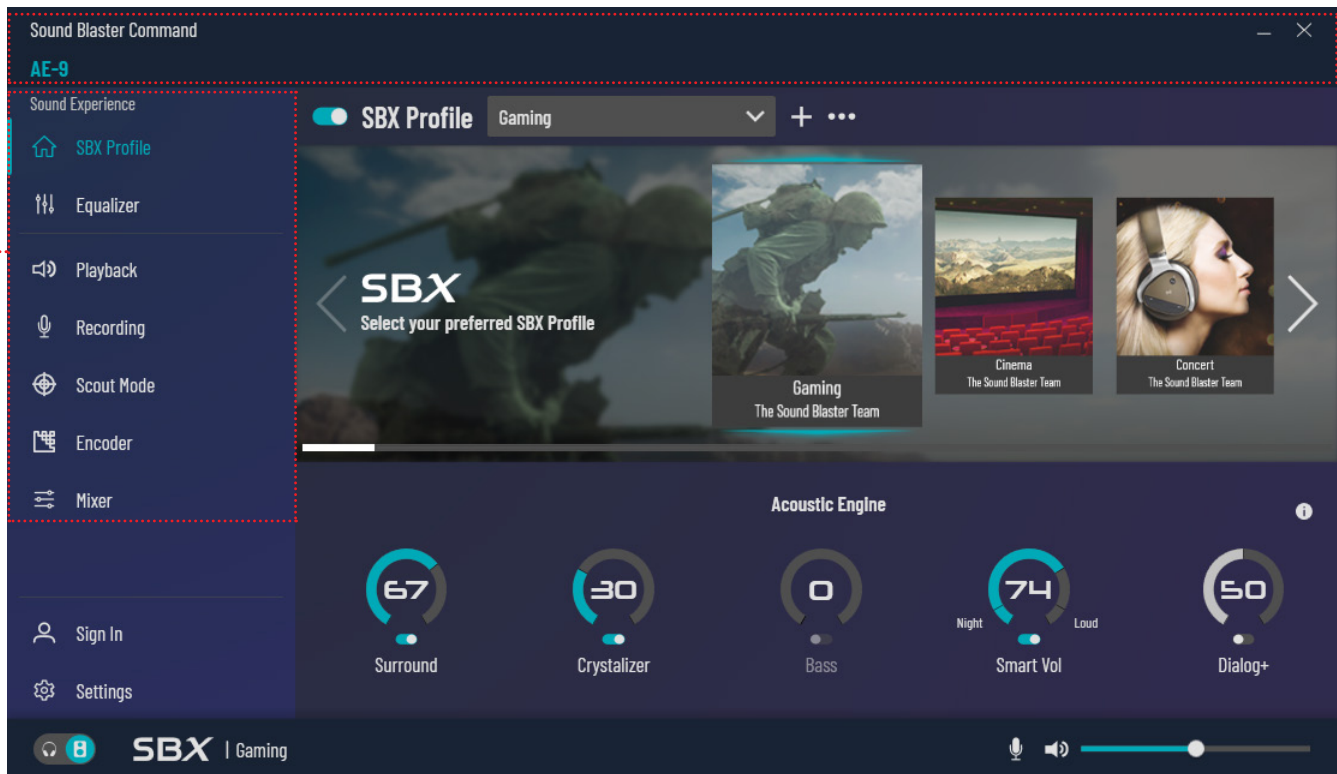
Available for Windows®, the comprehensive and easy-to-use **Sound Blaster Command** software offers users a complete control over their listening experience from audio realism to immersive audio effects, all which will intelligently embellish how users perceive sounds.

In this guide, users will be given an in-depth look at the fundamentals as well as advanced technologies incorporated into the software. Take a look at features ranging from SBX Profiles, Scout Mode to advanced audio settings that users are able to alter to their liking.

Do note that the features shown in this guide are product-dependent and may or may not be available in some device's software menu.

Visit [support.creative.com](https://support.creative.com) to download Sound Blaster Command.

# OVERVIEW



## 1. DEVICE TAB

Device(s) connected will be listed here. If there are multiple recognized devices connected, click on the tab to switch between devices for further customization and configuration.

## 2. DEVICE'S DASHBOARD MENU

The tabs displayed on the Dashboard Menu vary among devices. When switching between devices, the Dashboard Menu automatically updates to match the device's features and capabilities.

### • SBX Profile

Switch between pre-tuned SBX audio profiles for your music, movies and games or tweak EQ and Acoustic Engine effects such as Surround, Crystallizer, Bass, Smart Volume, and Dialog+ on this tab.

### • Super X-Fi

Maps the listener's head and ear shape, and transform audio heard based on given parameters via Super X-Fi technology to capture the listening experience of a high-end multi-speaker system – with the original depth, detail, realism, and immersiveness – on headphones.

### • Equalizer

Customize equalizer settings to fine-tune and personalize how audio sounds.

### • Playback

Set up and configure your Speaker, Headphone, and Digital (SPDIF) outputs. Features such as playback resolution settings, switching between Direct Mode and DSP mode, calibration of speakers, selection of pre-tuned Headphone profiles and testing of audio channels can be found here.

### • Recording

Set up and configure input sources such as Microphone, Aux-in, SPDIF-in, and What U Hear. Microphone-specific controls include Input Volume, Mic Boost, as well as CrystalVoice, which offers Noise Reduction, Acoustic Echo Cancellation, Smart Volume, Voice Morph, recording resolution, and Mic EQ that will help to improve Microphone recording quality.

### • Scout Mode

Set up Scout Mode to enhance important in-game audio cues, enable you to hear your opponents from further away, giving you a distinct tactical advantage during combat.

### • Encoder

Allow users to output audio stream in either Dolby Digital Live or DTS Connect encoded format through the Optical-out port.

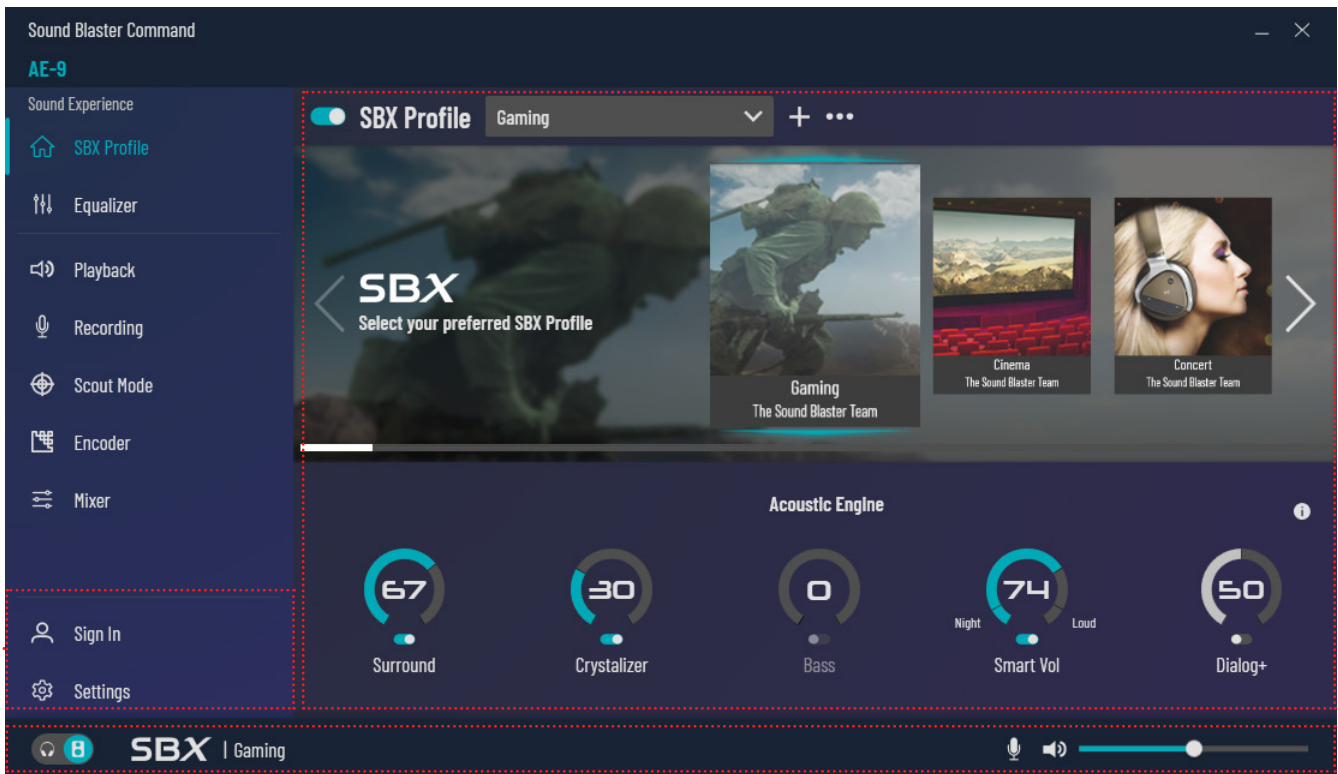
### • Mixer

Adjust settings for Playback, Recording, and control Audio Balance here.

### • Monitoring

Allow users to choose preferred audio input sources after selecting the audio output device.

# OVERVIEW



### 3. USER'S ACCOUNT AND SETTINGS

Allow users to configure application & device settings, as well as to check and perform application & firmware update.

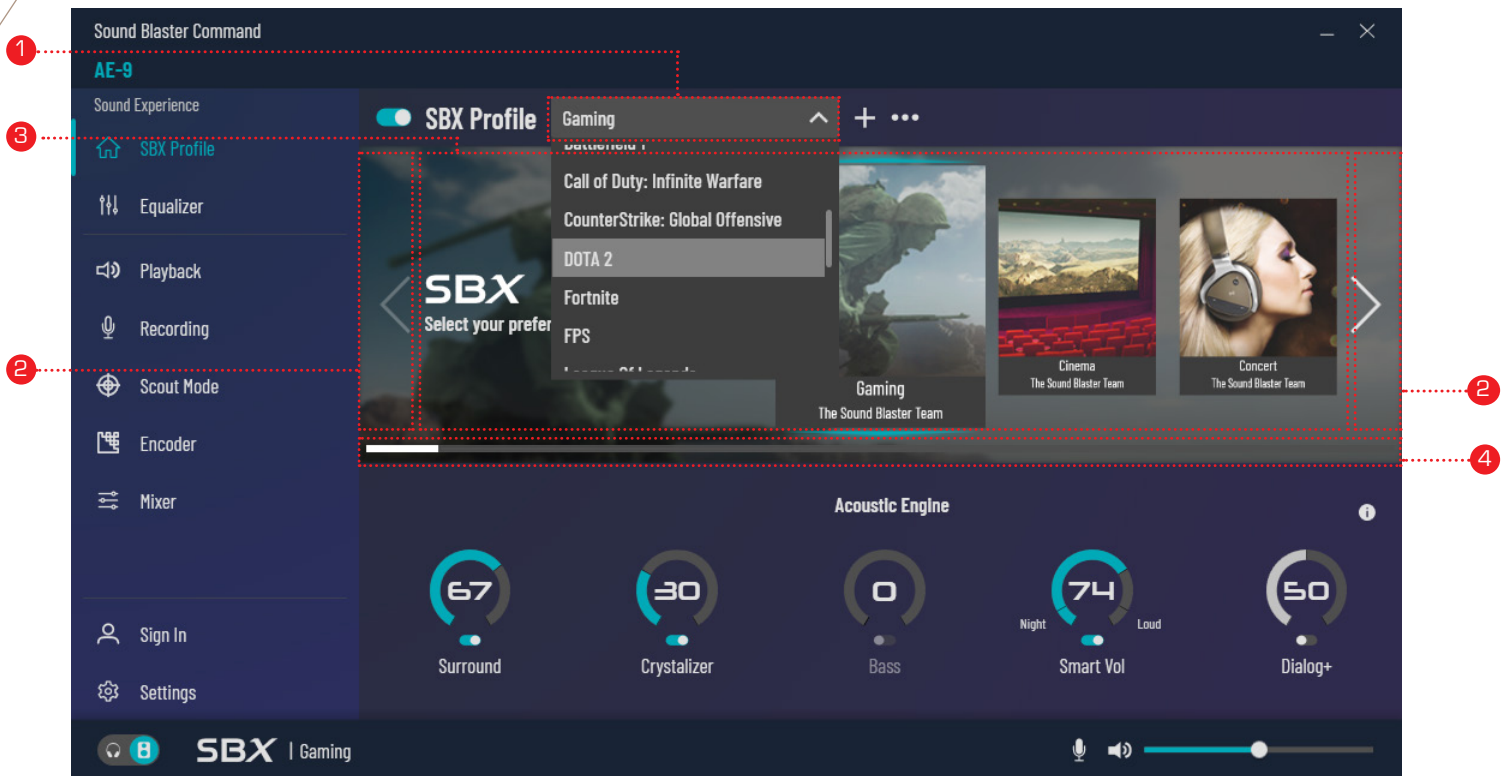
### 4. DASHBOARD

The dashboard displays a selection of SBX Profiles that can be accessed either by clicking on the drop-down menu or by leafing through. Further tuning, adjustments and customizations can also be conveniently accessed on the dashboard.

### 5. DEVICE STATUS

This is the information bar that display the status of the device. Information such as output path (Headphone or Speaker), SBX status, Dolby Audio, or DTS Connect output, Microphone status, and Speaker / Headphone Volume are displayed here. Click on the output switch to toggle between Speakers and Headphones. The highlighted icon, e.g. SBX Profile, demonstrates the current device's status. Users may also mute / unmute recording volume on a microphone as well as audio playback volume on the available slider bar.

# SBX PROFILE



## 1. SBX PROFILE DROP-DOWN MENU

On the SBX Profile tab, click on **SBX Profile's** drop-down menu to access a list of available SBX profiles to apply to your device:

- To create a new profile, click on the + button
- To revert / rename / delete new profiles made, click on the ... button

Note: Pre-tuned SBX profiles, with their respective Equalizer and Acoustic Engine settings, cannot be deleted and can only be reverted back to default settings.

## 2. PROFILE SCROLLING

Users may select a different profile by clicking the left / right arrows to select previous / next profile.

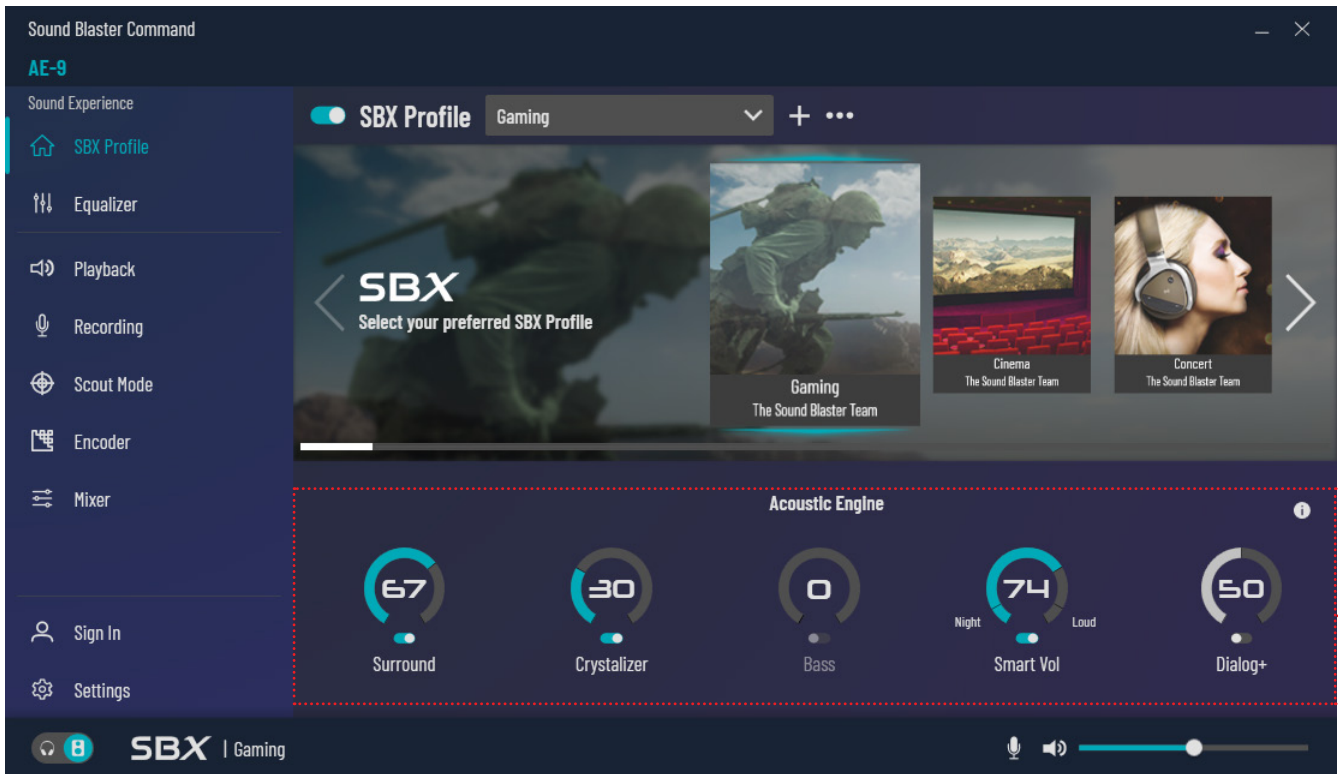
## 3. SBX PROFILES

A total of **five** illustrated profiles will be shown on the dashboard each time for ease of accessibility. Selected SBX profile will be highlighted and displayed in the middle. The highlighted profile will then be applied to the device in use.

## 4. SCROLL BAR

Users may click and drag the Scroll Bar to fast scroll between SBX profiles.

# SBX PROFILE

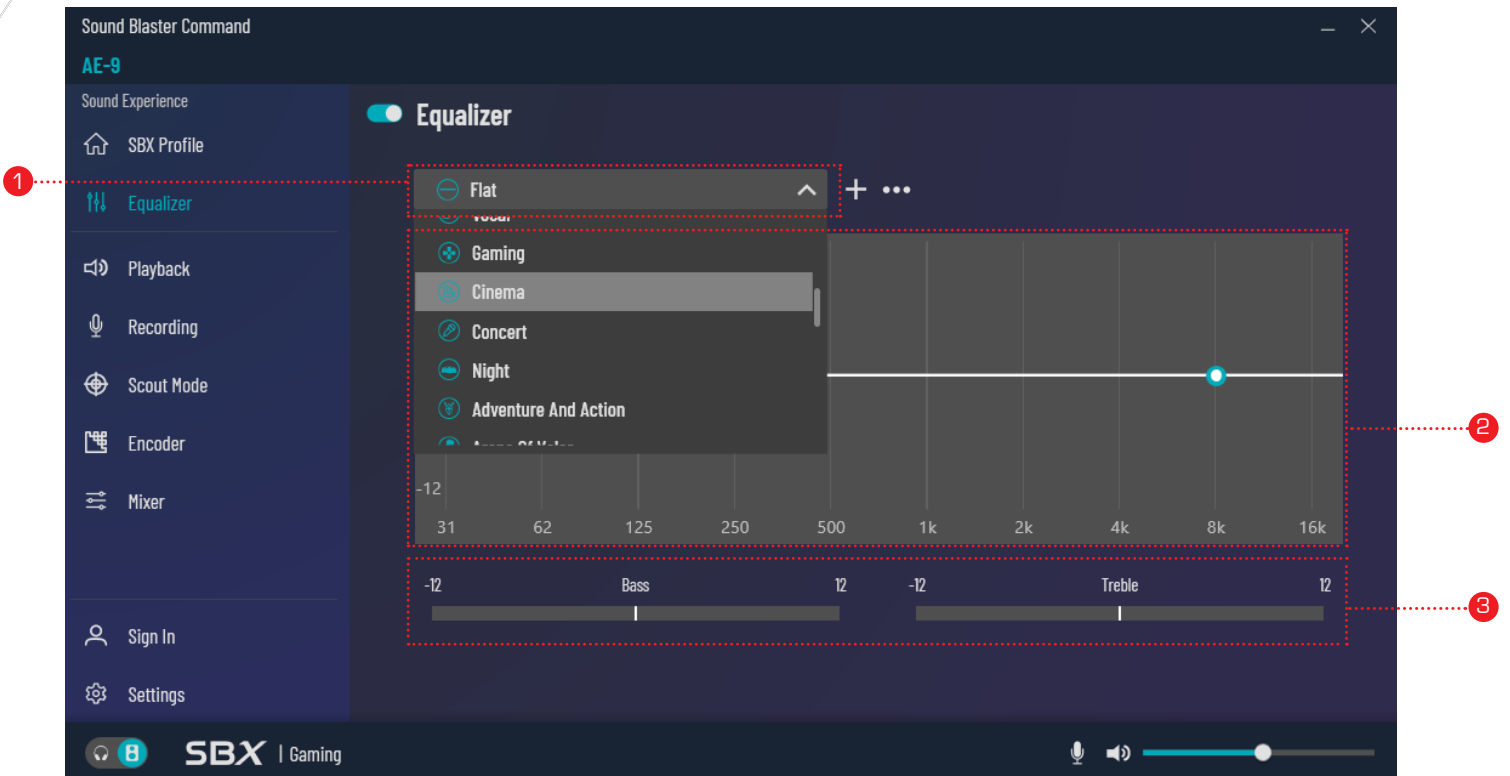


## 5. ACOUSTIC ENGINE

Click on the toggle button to turn on / off each of the Acoustic Engine parameters such as Surround, Crystalizer, Bass, Smart Vol, and Dialog+. Users may click and drag on the dial to change each parameter's values individually. Users may also click on the **i** button for more info.

Bass is only available when in Stereo Speaker or Headphone-out mode. Additionally, users may also set Bass Redirection and Crossover Frequency under Speaker Configuration window while in 5.1 Speaker configuration.

# EQUALIZER



## 1. EQUALIZER PRESET SELECTION

Click on the drop-down menu to switch between available equalizer presets. To create a new Equalizer preset, click on the + button. To revert / rename / delete new profiles made, click on the ... button.

Note: Default presets that have their Equalizer settings edited cannot be deleted and can only be reverted back to default settings. Presets created by users can only be renamed or deleted.

## 2. GRAPHIC EQ

While hovering over the EQ's canvas, the cursor will switch to a pen. Click and draw across the EQ canvas to create a new EQ effect. To fine-tune the effect, simply drag the cursor up / down on each band.

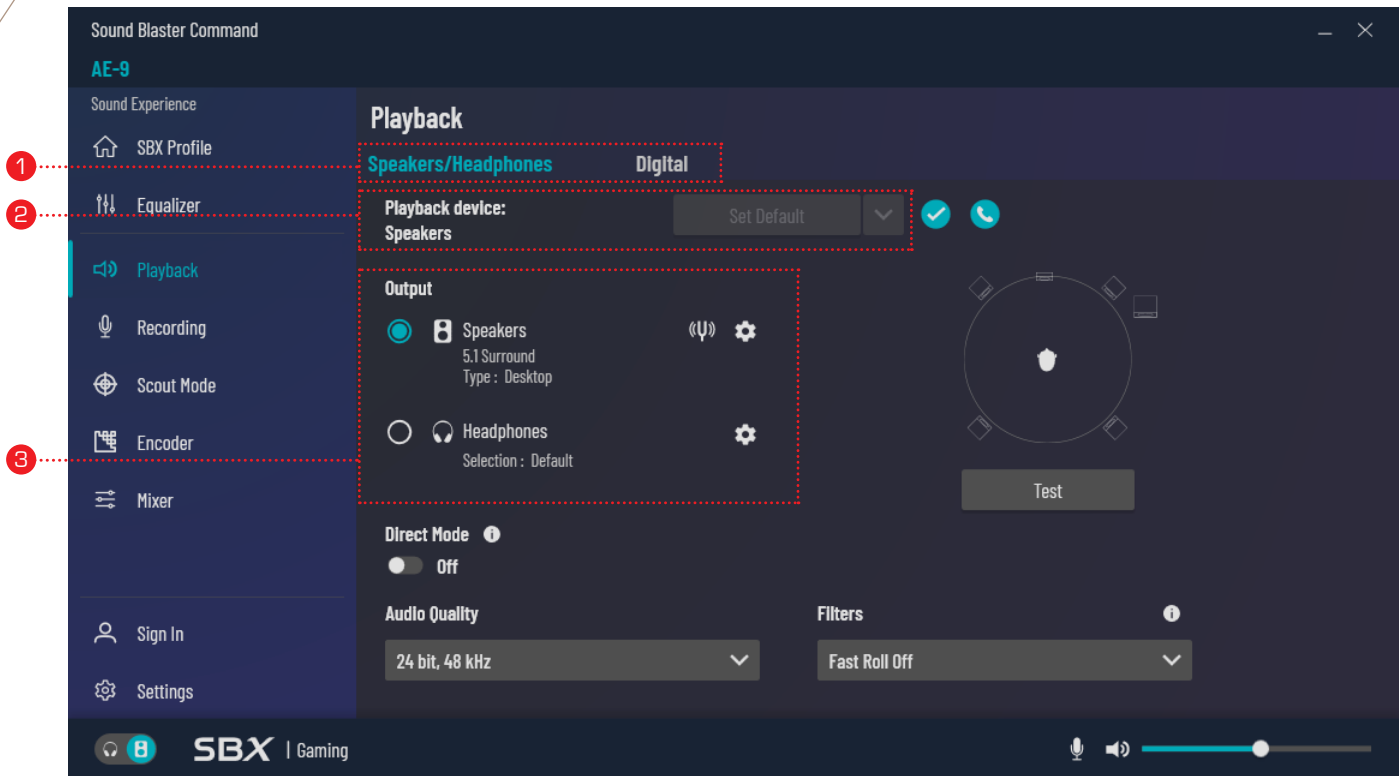
## 3. BASS & TREBLE SLIDER

Users may adjust the bass and treble level by clicking and dragging on the respective bars. Any changes made to the Bass / Treble values will be reflected on the EQ's pop-up window as shown in the illustration above.

Note: EQ effects are applied to the device in use, in real-time



# AUDIO PLAYBACK



## 1. SPEAKERS / HEADPHONES AND DIGITAL TAB

This is the configuration page for Speakers / Headphones and Digital output.

## 2. WINDOWS DEFAULT PLAYBACK DEVICE

Click on the button to set current device in use as Windows default. Doing this will allow users to make changes without opening Windows Sound Control Panel. If the playback device is already set as Windows default, the button will be grayed out.

## 3. SPEAKERS AND HEADPHONES SWITCH

Click on either one of the radio buttons to select an output for audio processing:

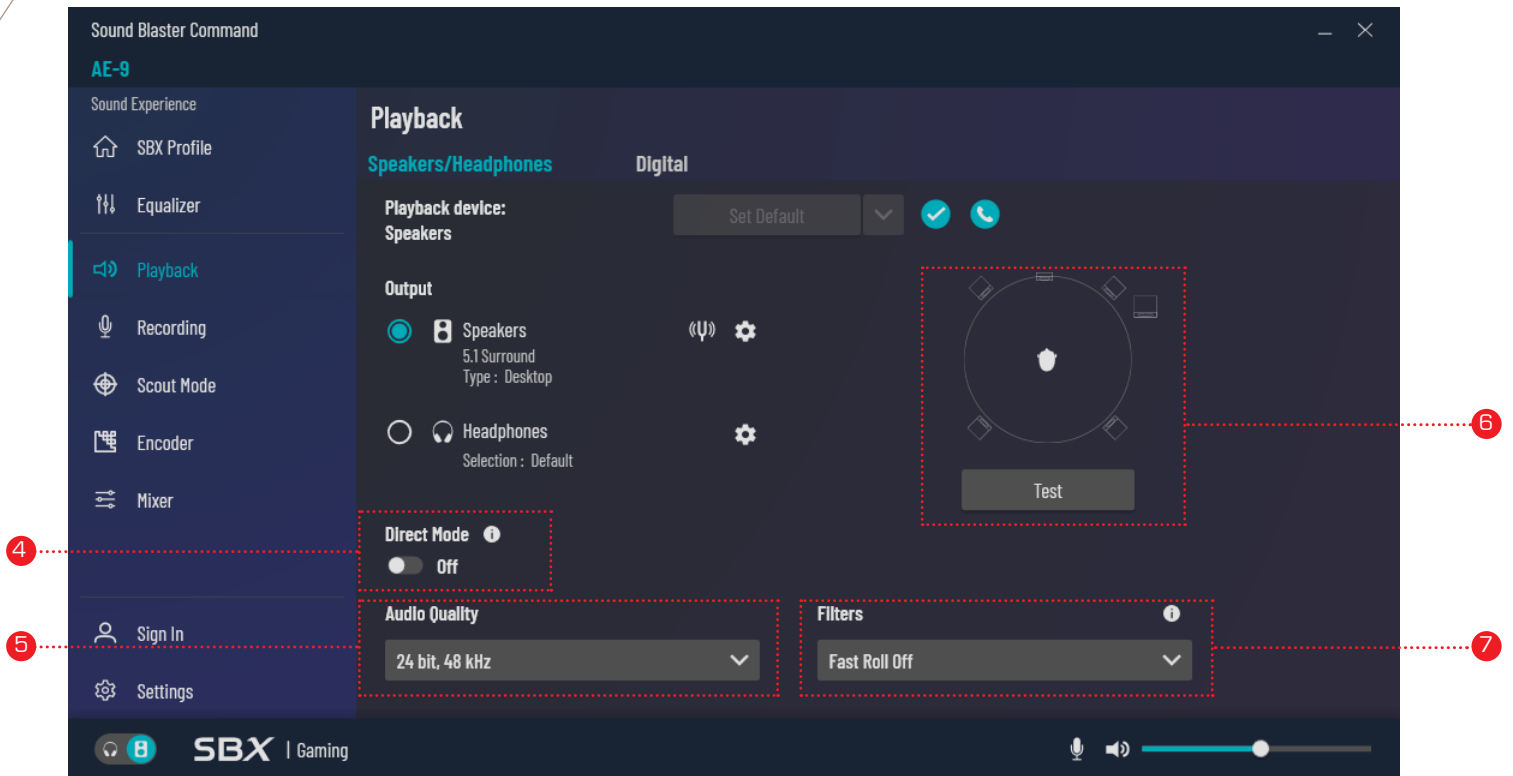
- Select the Speakers radio button to output audio to connected speakers
- Select the Headphones radio button output audio to connected headphone

Individual configurations are displayed beneath the Speakers and Headphones selection respectively. Click on either the **Configuration** or **Calibration** button for more settings.

Note: The option '**Apply Headphone Virtualization to Line-out**' is available under Headphones Configuration. When Headphone Virtualization is applied to Line-out, any headphones plugged into the Headphone Jack will be muted



# AUDIO PLAYBACK



## 4. DIRECT MODE

Enabling Direct Mode allows audio to output in its original form, directly from its original source. Activating Direct Mode will disable any audio effects applied, but SBX parameters can still be adjusted; The Status bar will display “Direct” to indicate that Direct Mode is enabled. Audio effects applied / changed in Direct Mode will take effect only when Direct Mode is disabled.

## 5. AUDIO QUALITY

Click on the drop-down menu to select desired playback audio quality / resolution.

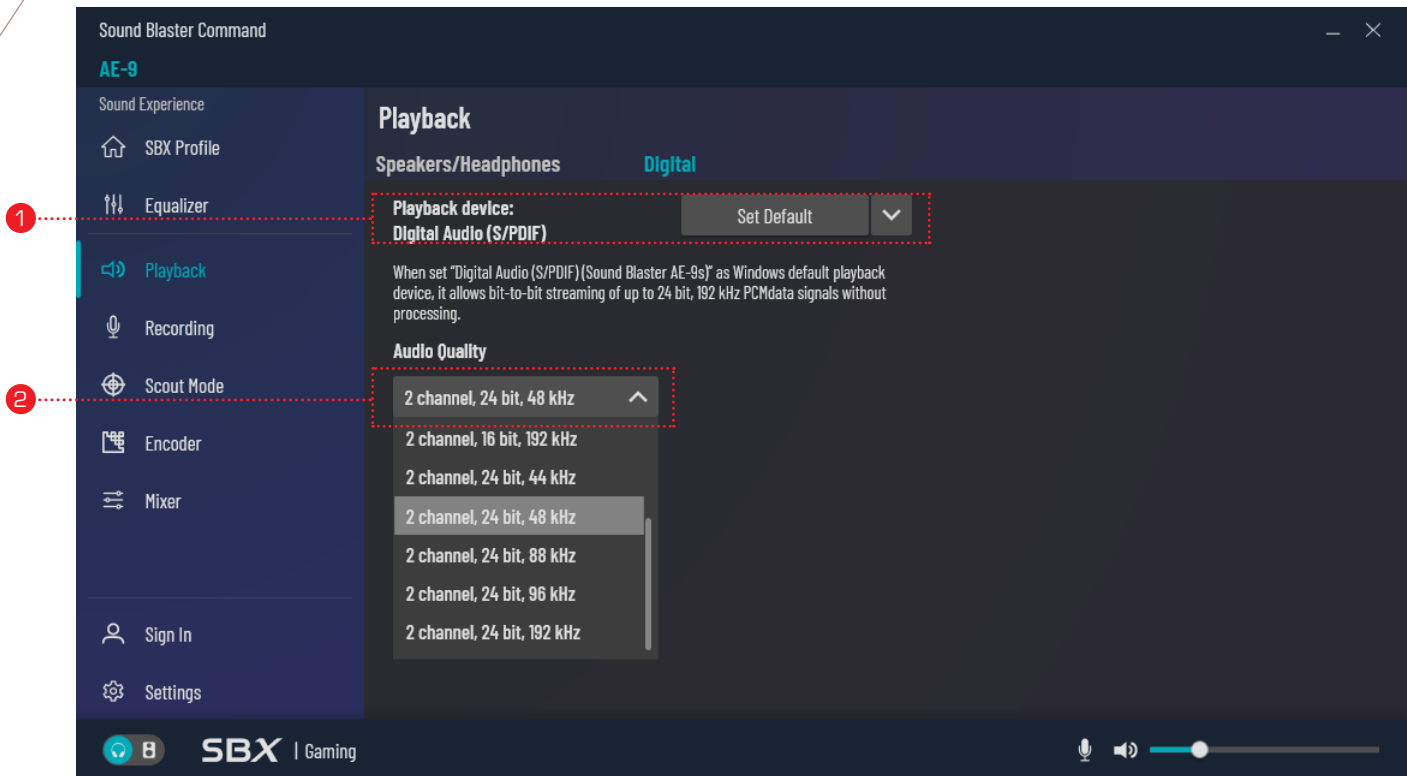
## 6. AUDIO CONFIGURATION VISUALIZATION

The Audio Configuration Visualization section displays user’s current speakers / headphones configuration. Users may click on the Test button available to test audio channel output.

## 7. FILTERS

Users may click on the drop-down menu to select their desired PCM Roll-off Filters. Filters can only be applied when Direct Mode is enabled.

# DIGITAL AUDIO PLAYBACK



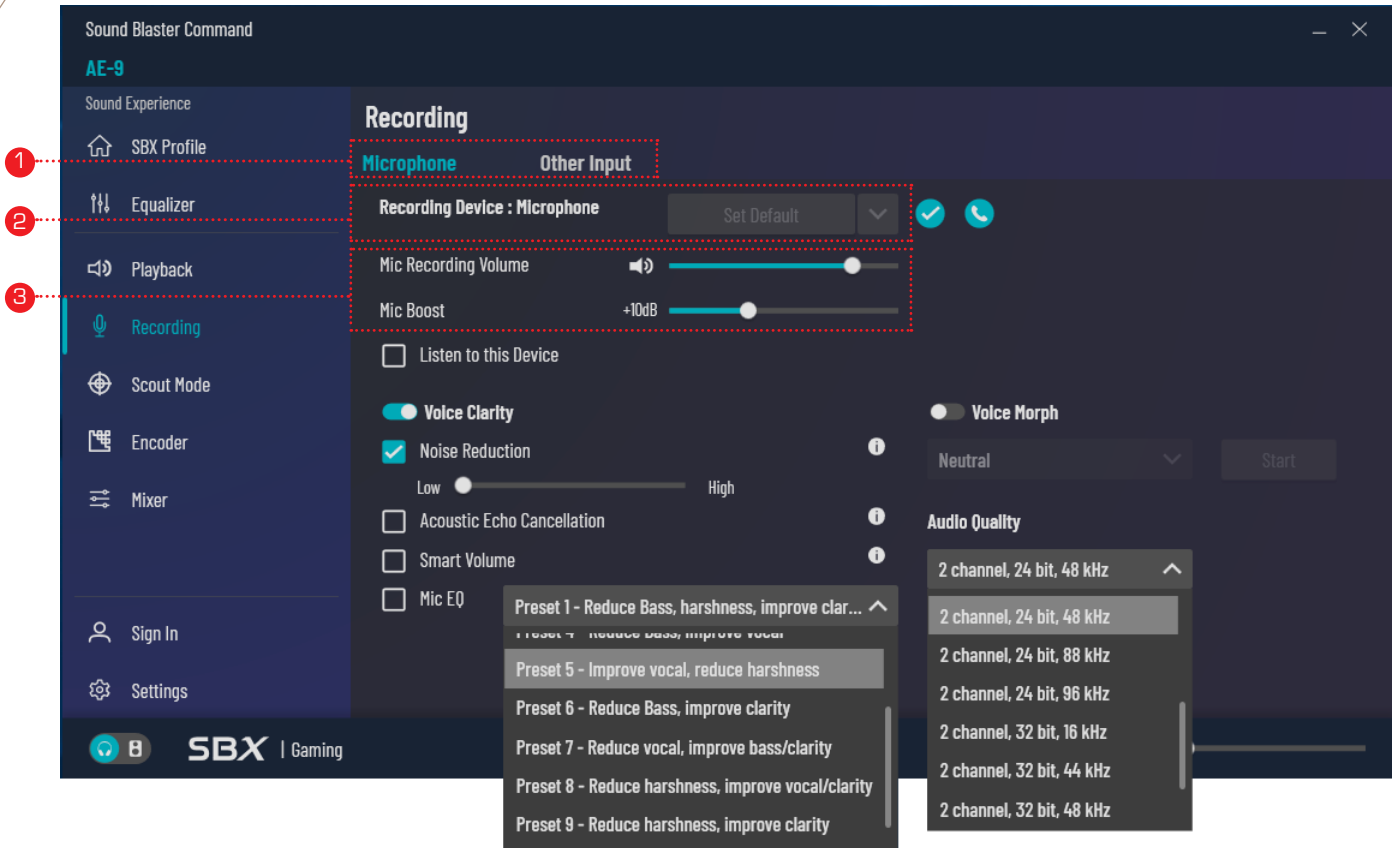
## 1. SET AS WINDOWS DEFAULT PLAYBACK DEVICE

Click on the “Set Default” button to set Digital (SPDIF-out) as Windows Default without opening Windows Sound Control Panel. If the playback device is already set as Windows default, the button will be grayed out.

## 2. AUDIO QUALITY

Click on the drop-down menu to select desired playback audio quality / resolution.

# AUDIO RECORDING



## 1. MICROPHONE AND OTHER INPUT TAB

The Microphone tab offers users the ability to configure microphone input with various controls and CrystalVoice technology while the Other Input tab allows users to choose between recording devices e.g. AUX-in / Line-in, Digital (SPDIF-in) and What U Hear.

This feature is product-dependent and may or may not be available for some products.

Do note that some of the features shown in this guide are product-dependent and may or may not be available in some device's software menu.

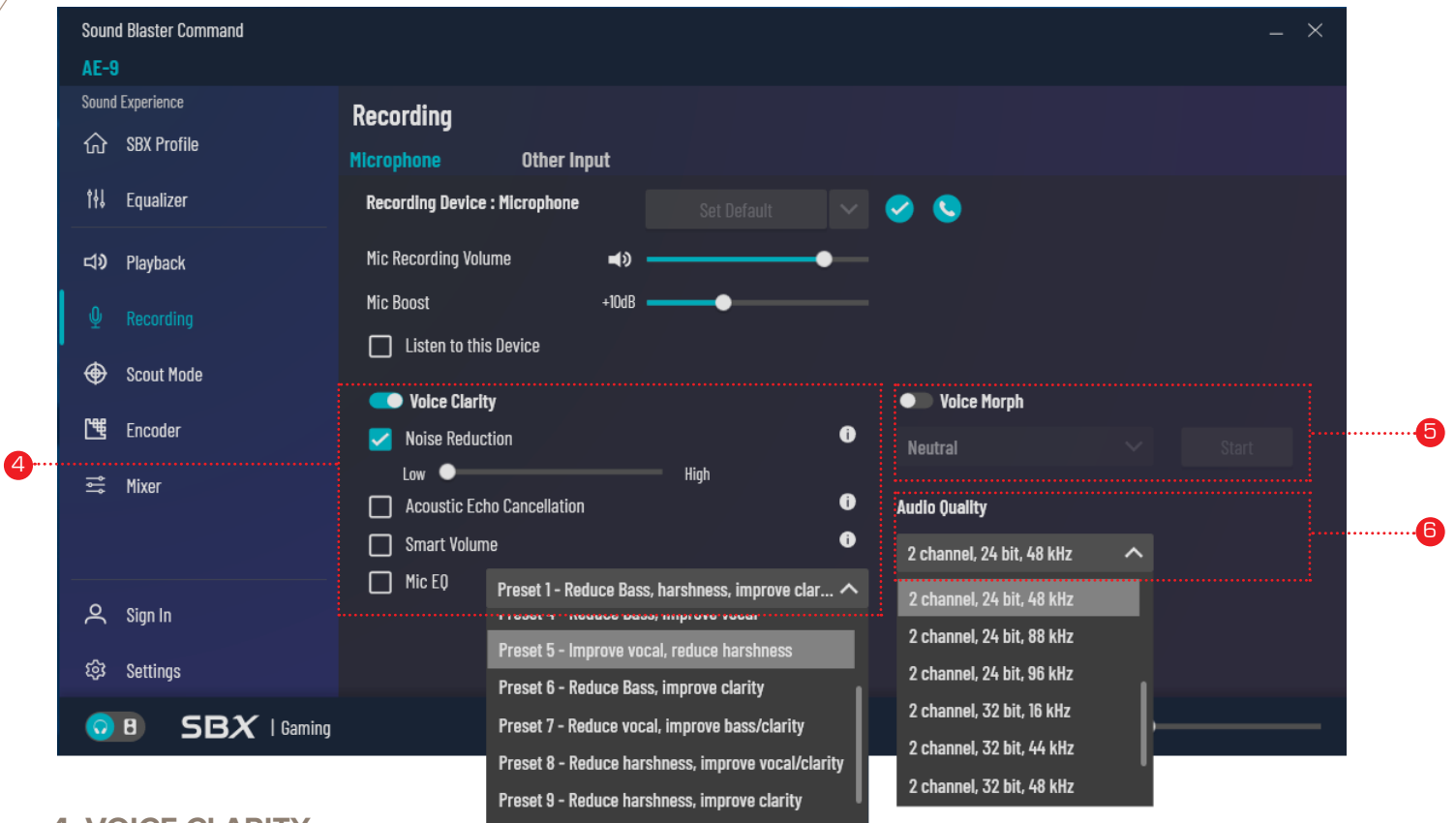
## 2. SET AS WINDOWS DEFAULT

Click on the "Set Default" button to set Microphone as Windows Default recording device without opening Windows Sound Control Panel. If the recording device is already set as Windows default, the button will be grayed out.

## 3. MICROPHONE VOLUME SLIDER

Users may adjust the Mic Recording Volume and Mic Boost level by adjusting their respective slider bars.

# AUDIO RECORDING



## 4. VOICE CLARITY

The Voice Clarity panel allows users to enable, disable, or fine-tune the intensity of the Noise Cancellation effect. Users may also enjoy convenient access to the following features: Acoustic Echo Cancellation, Smart Volume, and Mic EQ.

The Mic EQ drop-down menu offers presets that enhances or offsets different microphone characteristics for improved recording quality. The following table summarizes the differences:

GENERAL	DESCRIPTION
<b>Preset 1</b>	Reduces Bass/Harshness, Improves Clarity
<b>Preset 2</b>	Reduces Bass, Improves Vocal/Clarity
<b>Preset 3</b>	Reduces Harshness, Improves Vocal
<b>Preset 4</b>	Reduces Bass, Improves Vocal
<b>Preset 5</b>	Reduces Bass/Harshness, Improves Vocal
<b>Preset 6</b>	Reduces Bass, Boosts Clarity
<b>Preset 7</b>	Reduces Vocal, Improves Bass, Boosts Clarity
<b>Preset 8</b>	Reduces Harshness, Improves Vocal/Clarity
<b>Preset 9</b>	Reduces Harshness, Improves Clarity
<b>Preset 10</b>	Improves Clarity
<b>DM-1</b>	Improves Vocal, Boosts Clarity (For Creative DM-1 Mic)

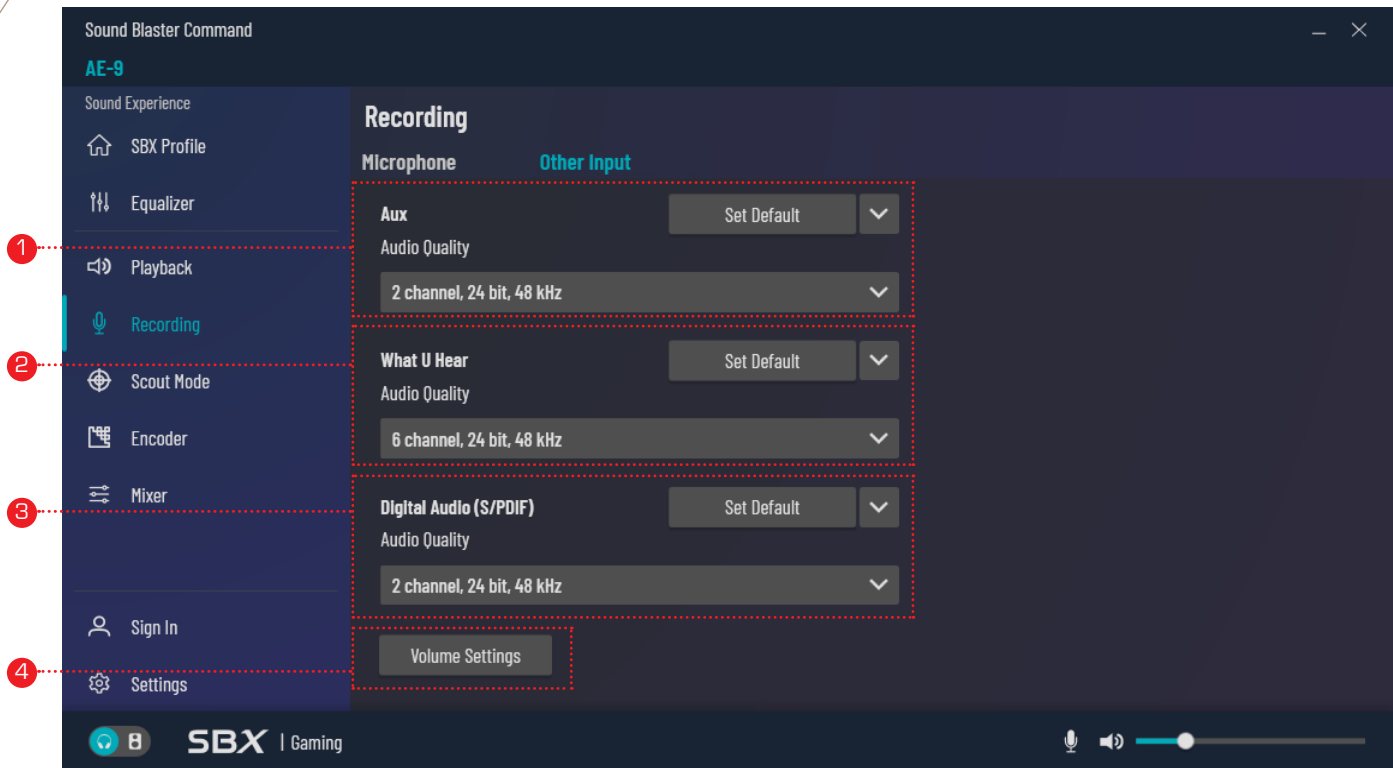
## 5. VOICE MORPH

Click on the drop-down menu to apply Voice Morph effects to a voice. Users may click on the Test button to listen to the applied effect.

## 6. AUDIO QUALITY

Click on the drop-down menu to select desired recording audio quality / resolution.

# OTHER RECORDING INPUTS



## 1. AUX / LINE-IN

Click on the “Set Default” button to set AUX / Line-in as Windows Default recording device without opening Windows Sound Control Panel. If the recording device is already set as Windows default, the button will be grayed out. Users may also click on the Audio Quality’s drop-down menu to select desired recording quality / resolution.

## 2. WHAT U HEAR

Click on the “Set Default” button to set What U Hear as Windows Default recording device without opening Windows Sound Control Panel. If the recording device is already set as Windows default, the button will be grayed out. Users may also click on the Audio Quality’s drop-down menu to select desired recording quality / resolution.

## 3. DIGITAL (SPDIF-IN)

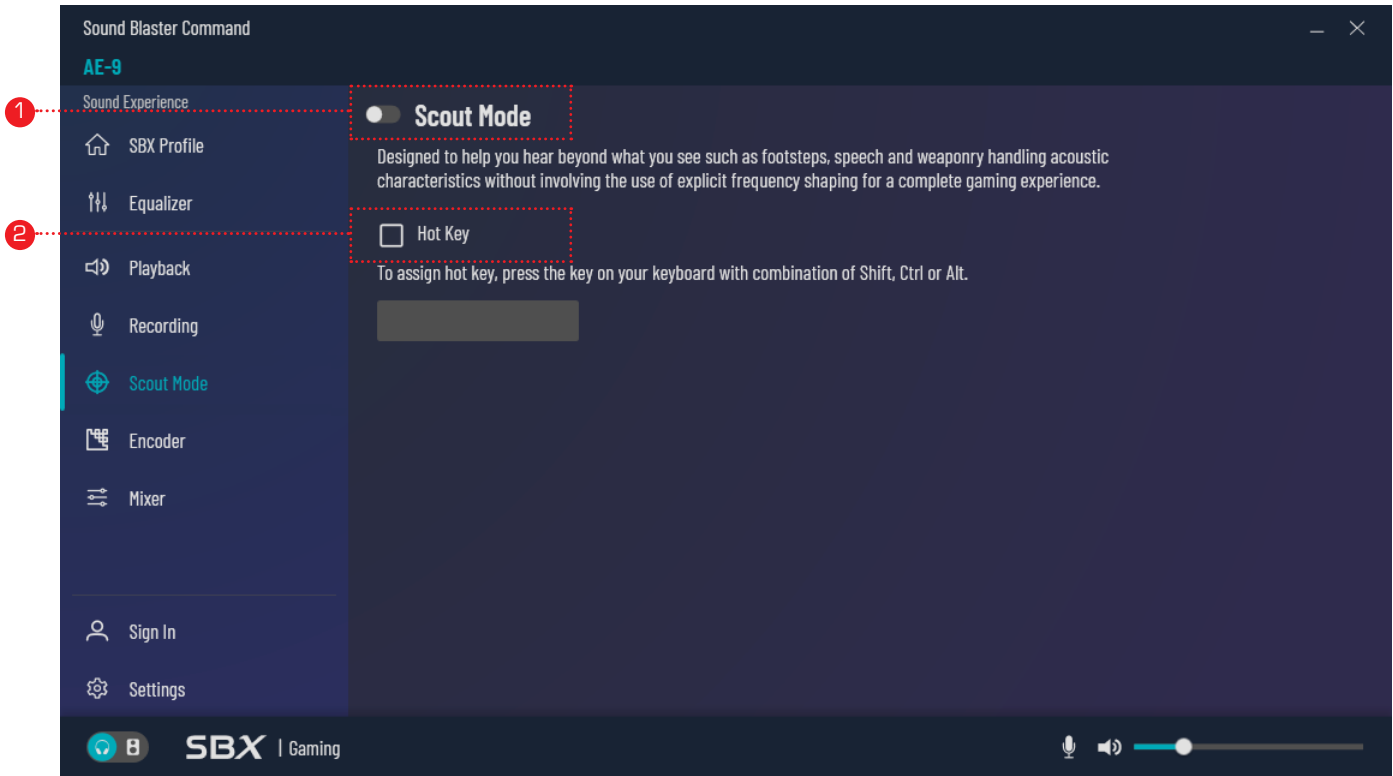
Click on the “Set Default” button to set Digital (SPDIF-in) as Windows Default recording device without opening Windows Sound Control Panel. If the recording device is already set as Windows default, the button will be grayed out. Users may also click on the Audio Quality’s drop-down menu to select desired recording quality / resolution.

## 4. VOLUME SETTINGS

Click on the button to access Mixer’s volume settings for recording inputs.

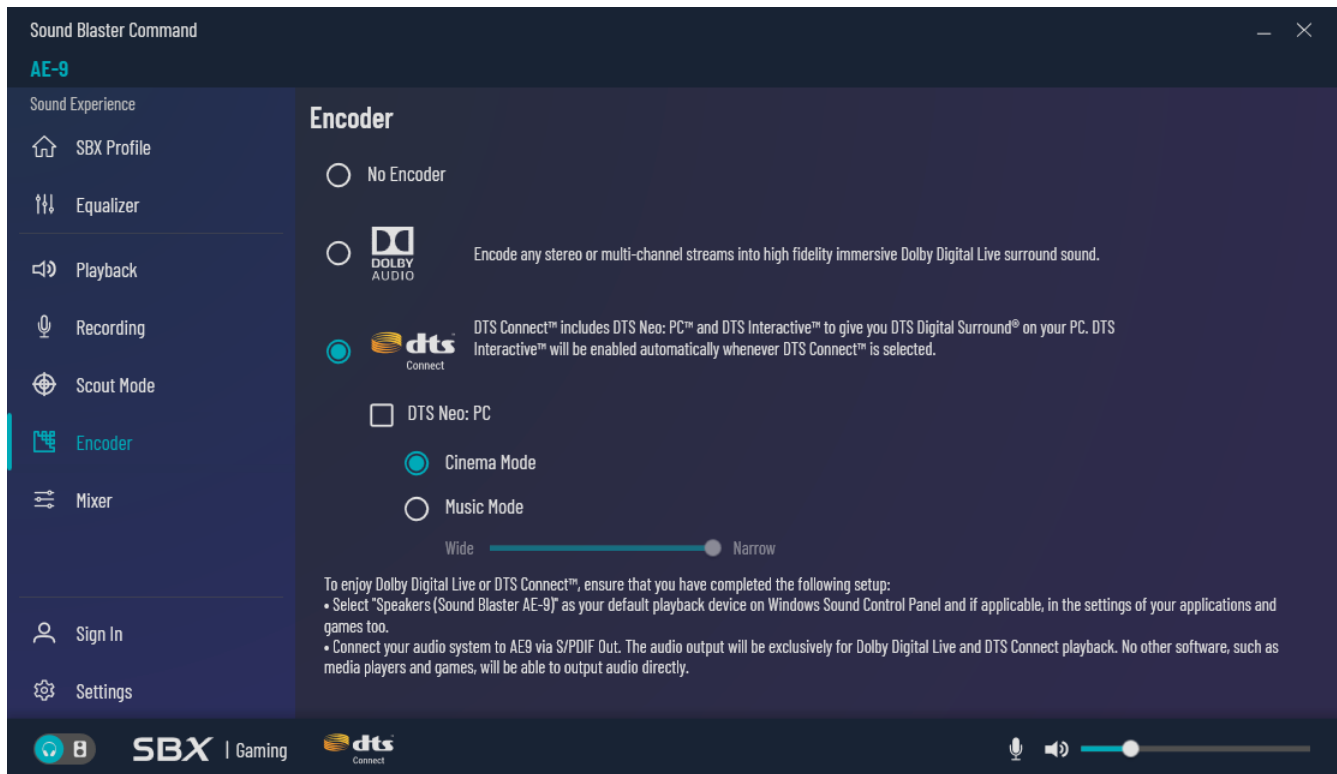
# SCOUT MODE

**Scout Mode** enhances important in-game audio cues – such as footsteps and weapon switching sounds – allowing you to quickly and accurately pinpoint your opponent’s location, giving you a distinct tactical advantage during combat.



1. Turn on / off Scout Mode by clicking on the toggle button. Turning on / off Scout Mode by using Hot Key is also supported.
2. Click on the check box to activate / deactivate the use of Hot Key for Scout Mode. Thereafter, click on the key assignment field and press your desired key on the keyboard (accompanied by “Alt”, “Ctrl” or “Shift”) to assign a Hot Key for Scout Mode.

# ENCODER



## SELECTING AN ENCODER

This feature is available only for products with built-in encoding technologies. (e.g. Dolby Digital Live, DTS Connect) No encoder is selected by default.

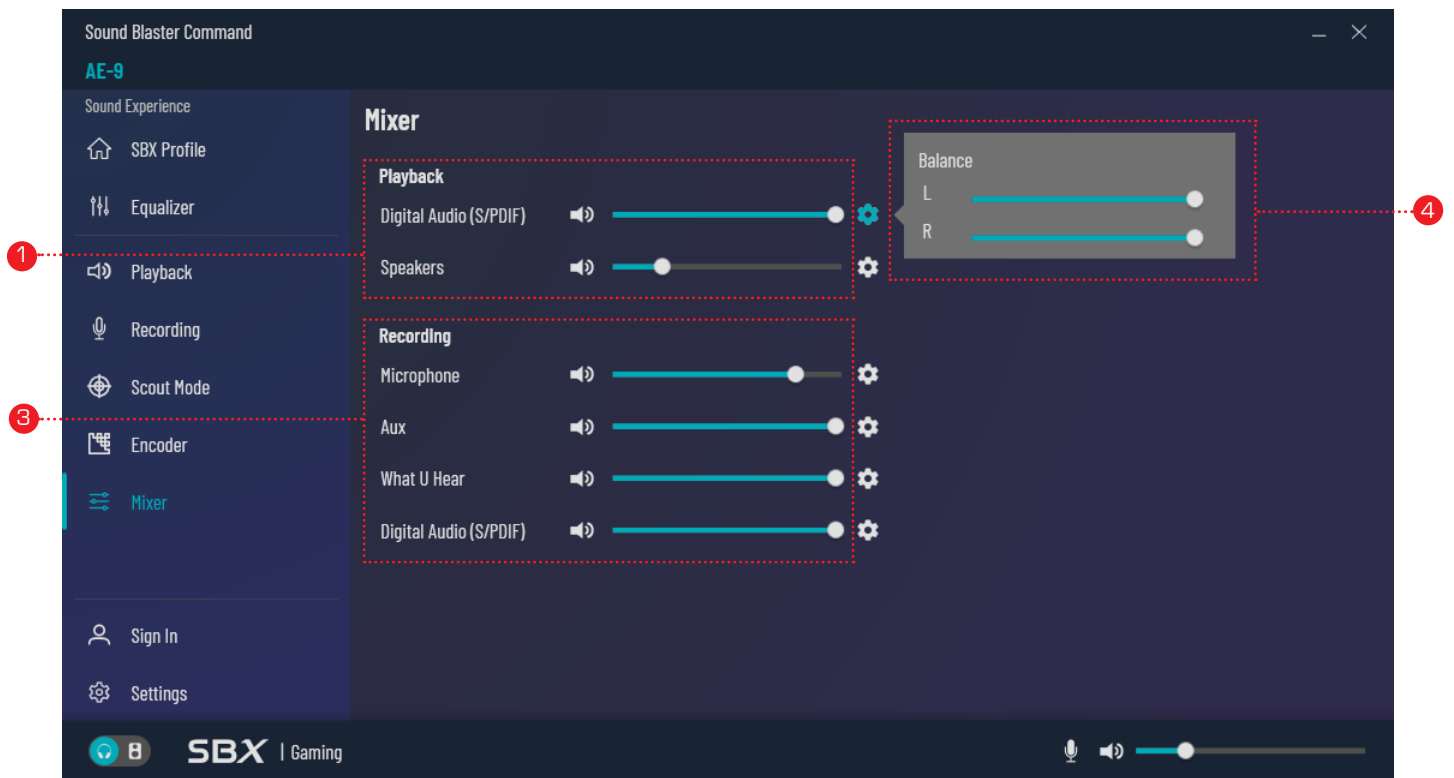
- Click on Dolby Audio's radio button to enable audio output in Dolby Digital Live surround sound format.
- Click on DTS Connect's radio button to enable audio output in DTS Connect surround sound format.

Note: To enjoy Dolby Digital Live or DTS Connect™, ensure that you have completed the following setup:

- Select current device in use as your default playback device. If applicable, in the settings of users' applications and games too.
- Connect the audio system to current device in use via SPDIF-out. The audio output will exclusively be used for Dolby Digital Live and DTS Connect audio playback. No other software, such as media players and games will be able to output audio directly.



# MIXER



## 1. PLAYBACK

Adjust audio playback volume for each supported output.

## 2. MONITORING

Adjust audio playback volume for each monitoring source.

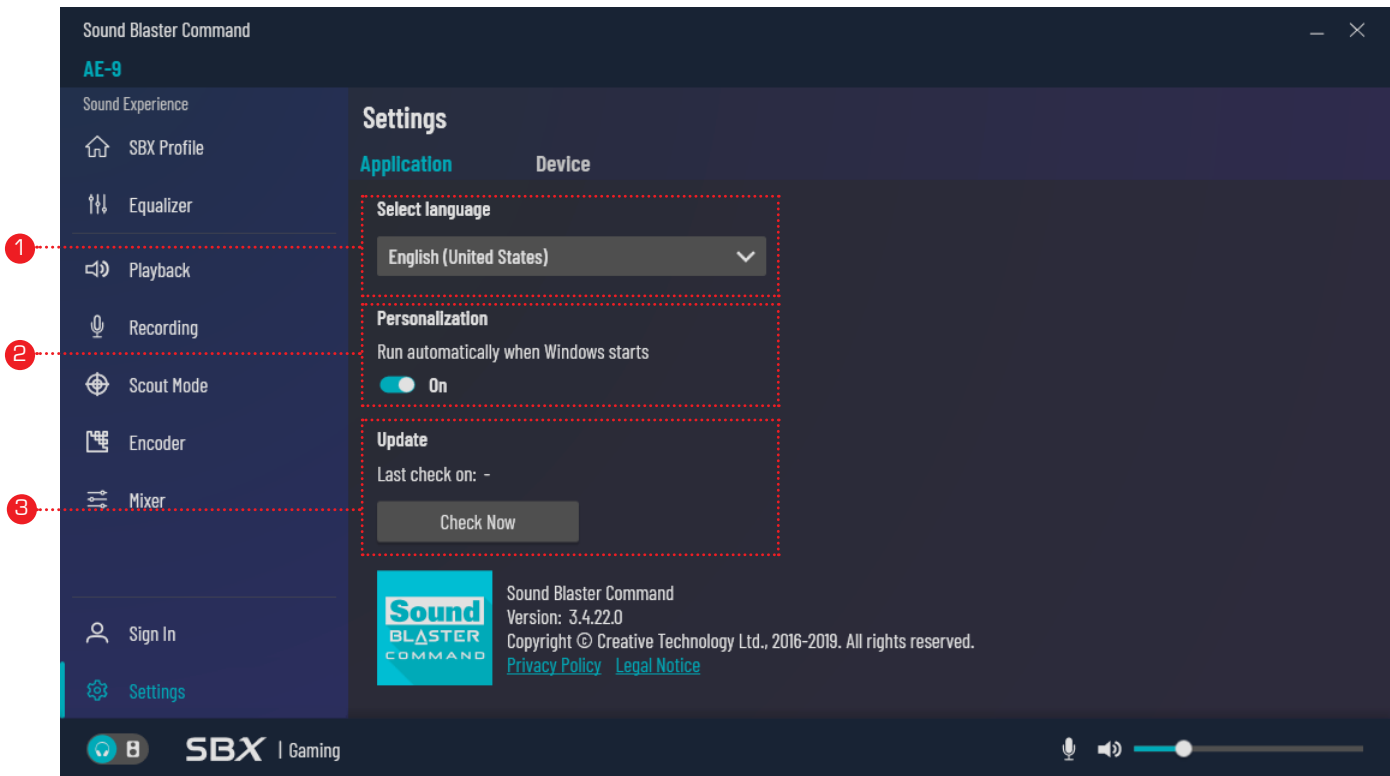
## 3. RECORDING

Adjust recording volume for each input source e.g. Microphone, SPDIF-in, and What U Hear.

## 4. BALANCE

Click on the available gear buttons to trigger Audio Balance's pop-up bubble. The pop-up bubble allows users to adjust balance to various audio channels.

# SETTINGS: APPLICATION SETTINGS



## 1. SELECT LANGUAGE

Click on the drop-down menu to select preferred language to run the software in. Software will be in English (United States) by default.

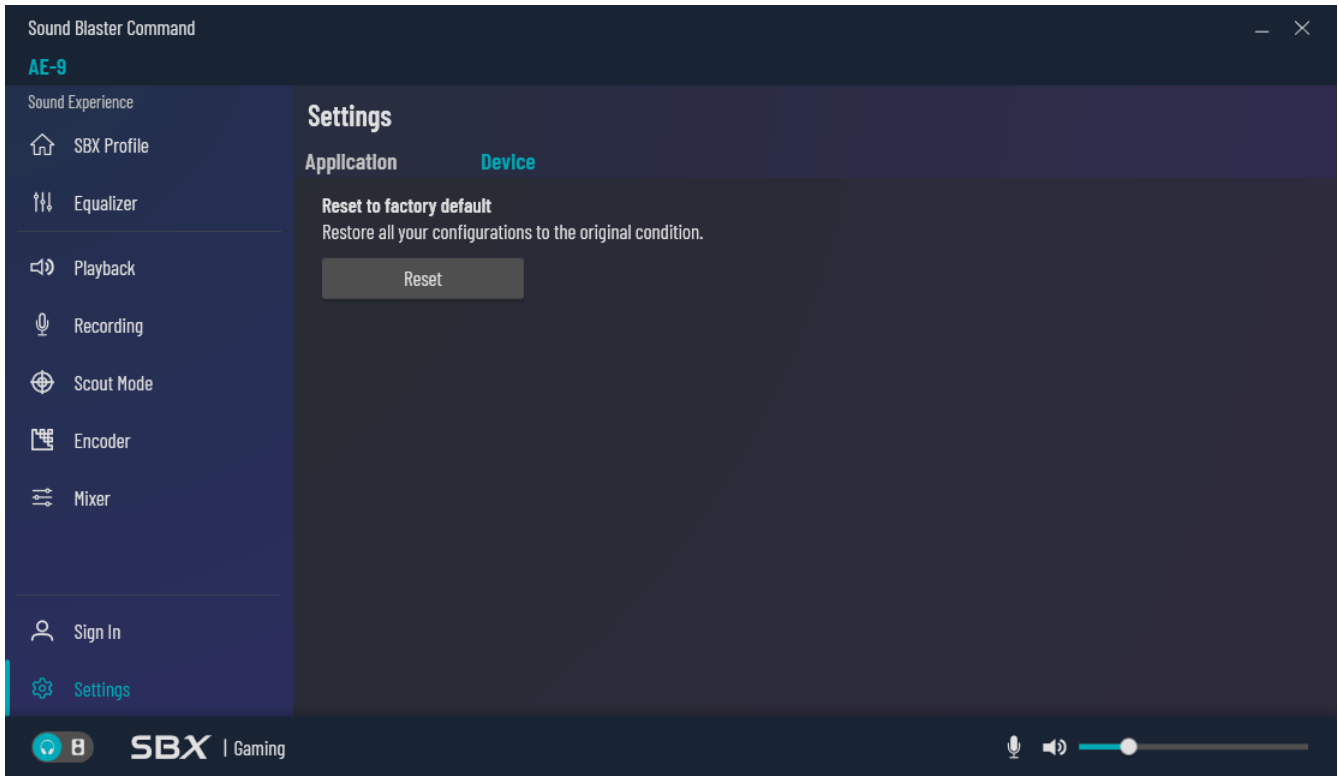
## 2. PERSONALIZATION

When the toggle button displays (ON), the software will run automatically when Windows start. If users prefer to have this feature turned off, click on the toggle button to turn it off.

## 3. UPDATE

Click on the [CHECK NOW] button to check for the latest updates. A pop-up will appear to notify users if there's a new update or if the software is currently up to date.

# SETTINGS: DEVICE SETTINGS

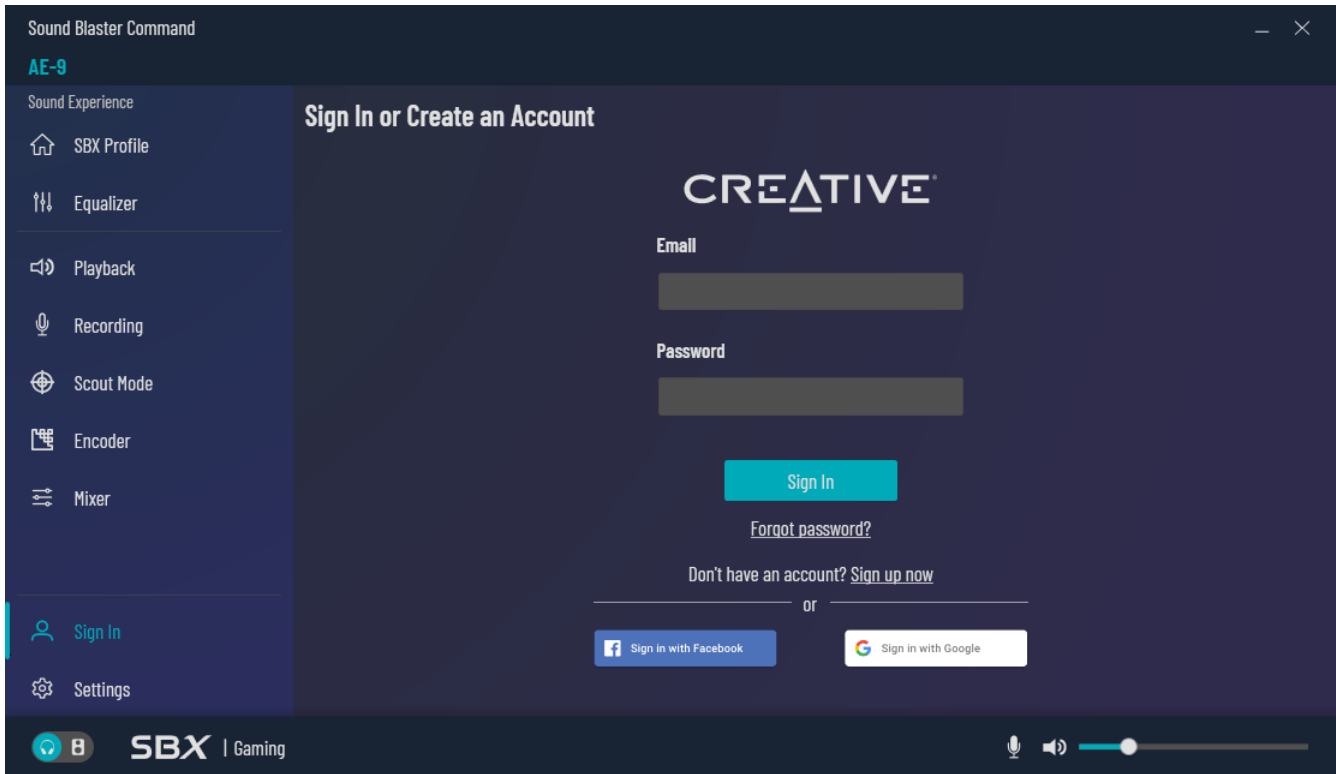


## RESET TO FACTORY DEFAULT

Restore device back to factory settings.

Note: Resetting the device back to factory default will erase all changes made to SBX profiles, EQ presets, and all other configurations. Profiles created by users will not be erased upon Reset.

# USER ACCOUNT: SIGN IN

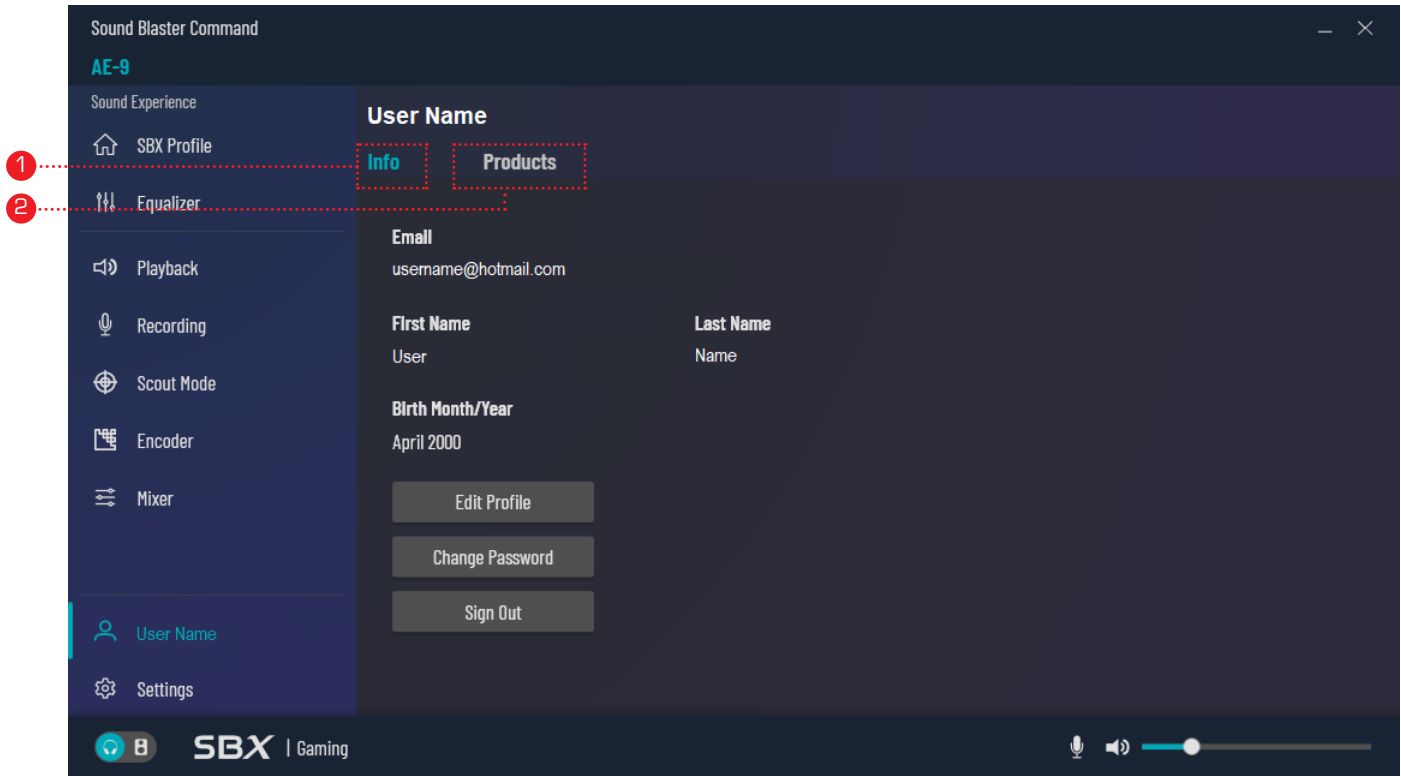


## USER ACCOUNT

Users who sign up for an account on the Sound Blaster Command will have the following access:

- Edit personal information
- Register current and new Creative products
- View registered product's warranty status

# USER INFO



## USER'S INFORMATION

Upon successful login, users will be greeted with two tabs, **Info** and **Products**.

### 1. INFO

Users may view their registered email address, name and birthday on this tab. Additionally, they may also edit their profile, change their password, or sign out by clicking on the respective buttons.

### 2. PRODUCTS

All registered products linked to the user's account will be available under this tab. Users may also register their new Sound Blaster product(s) here.